



Instructions for use
COFFEE GRINDER

COFFEE GRINDER



CG 510

COFFEE GRINDER

TABLE OF CONTENTS

4	Catler recommends safety first
7	Know your CG 510 COFFEE grinder
9	Operating your CG 510 coffee grinder
12	Care and cleaning



16

34

SET

+

-

▶||

Congratulations

for purchasing your new coffee grinder CG 510.

CATLER RECOMMENDS SAFETY FIRST

- This appliance is not to be used by children. Keep this appliance and its power cord out of children.
- The appliances may be used by persons with physical or mental impairments or by inexperienced persons only if they are properly supervised or have been informed about how to use of the product in a safe manner and understand the potential dangers.
- Cleaning and maintenance performed by the user must not be performed by children.
- Children must not play with the appliance.
- If the power cord is damaged, ask the authorised service for a replacement in order to prevent hazards. It is forbidden to use the appliance if it has a damaged power cord.
- **WARNING: Misuse may cause injury.**
- Please pay increased attention to handling the burrs not to cause injury.
- Wipe the coffee bean hopper with a soft sponge lightly moistened in warm water and wipe dry. Wash the coffee container in warm water with a small amount of washing-up liquid. Rinse and wipe dry.

- Always disconnect the appliance from the power socket if you are leaving it unattended and before assembly, disassembly, or cleaning.
- Before exchanging the accessories or accessible movable parts, please turn the appliance off and disconnect it from the power supply.
- This appliance is designed for household use only. This appliance is not designed for commercial use. Do not use this appliance in moving vehicles or on boats, outdoors, or for any purpose other than it's intended. Otherwise, there is a risk of personal injury.
- The appliance is not intended for use in premises such as:
 - staff kitchens in stores, offices and other workplaces;
 - hotel or motel rooms and other living areas;
 - agricultural farms;
 - bed and breakfast establishments.
- Do not submerge the appliance, power cord, or plug in water or any other liquid.
- Make sure that the mains cord and plug do not come into contact with water or other liquid.
- Use the appliances according to the instructions in this user's manual. Otherwise, injury, damage to the appliance or dangerous situation might occur.
- Do not use this appliance with a programmable switch, timer switch or any other device that automatically switches the appliance on.
- This appliance has been designed ONLY to grind roasted coffee beans. Never use the appliance for purposes other than those for which it was designed.
- This appliance is NOT designed to grind pre-ground coffee. Under no circumstances should the appliance be used to grind gluey food or extremely hard food, to make dough and grind fruit, seeds or herbs for example to produce curry pasta or nut butter.
- Do not put metallic objects or similar items that might damage or adversely influence the appliance operation in the coffee bean hopper.
- Before connecting the appliance to a power socket, check that the nominal voltage on the appliance's rating label matches the electrical voltage in the socket.
- Connect the appliance only to a properly grounded socket. For safety reasons, we don't recommend using adaptor plugs or extension cords.
- Do not place the appliance on windowsills, sink drip tray or on unstable surfaces. Always place the appliance on a stable, flat, and dry surface.
- Do not place the appliance on electric or gas cooker or in the vicinity of naked flame.
- Never use the appliance in close vicinity of a bath, shower, or swimming pool.
- Only use the appliance with the original supplied accessories.
- Always turn the appliance off and disconnect from the power socket if it's to be unused or left unattended, before disassembling or assembling, before filling the hopper or before moving or cleaning. Allow the appliance to fully cool down before cleaning or moving.
- Keep the appliance and its accessories in clean condition. Perform the cleaning and

maintenance in accordance with the instructions in chapter Cleaning and maintenance. Never wash the appliance under running water or submerge it in water or another liquid.

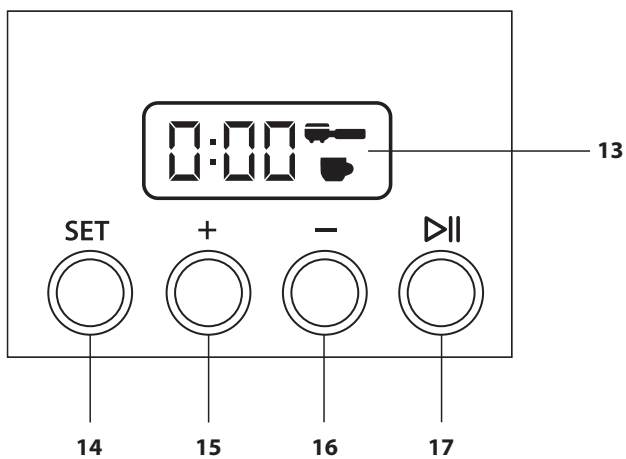
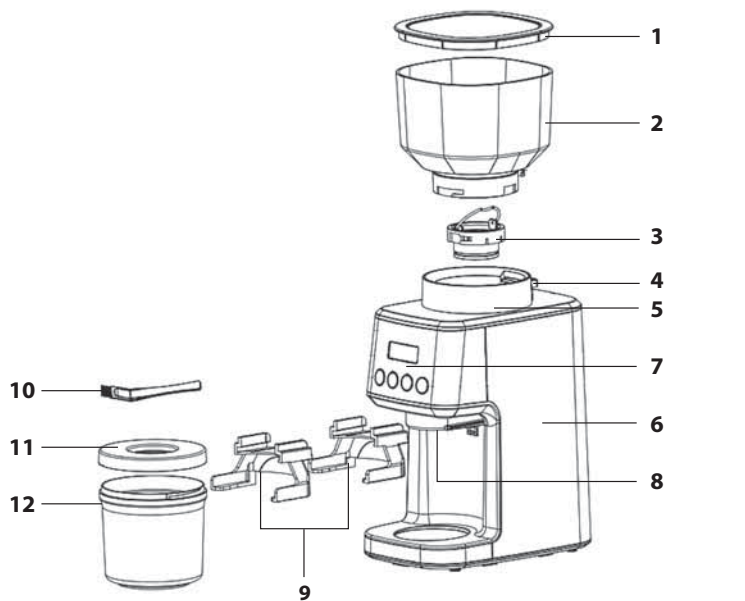
- Before turning the appliance on, attach the coffee bean hopper lid properly on the hopper.
- Do not turn the appliance on until the coffee bean hopper and the lid is properly secured in place.
- Do not use the appliance if the coffee bean hopper is not properly attached. Be careful during operation and do not insert fingers, hands, hair, clothing, or kitchen utensils in the vicinity of the coffee bean hopper.
- Do not use the appliance for longer than 2 minutes, otherwise it might overheat. If such situation occurs, please turn the appliance off and disconnect it from the power supply. Allow the appliance to cool down for 30 minutes, then try to turn it on again.
- Before connecting this appliance to a power socket, make sure the voltage stated on the product's rating label corresponds to the voltage in your power socket.
- Do not disconnect the appliance from the power socket by pulling the power cord. This could damage the power cord or the power socket. Disconnect the cord from the power socket by gently pulling the plug of the power cord.

IMPORTANT SAFETY INSTRUCTIONS FOR USING ELECTRICAL EQUIPMENT

- Fully unwind the power cord before use.
- Do not leave the power cord hanging over the edge of a table or countertop or allow it to touch a hot surface or to become tangled up. Do not put heavy objects on the power cord.
- For safety reasons, we recommend connecting the appliance in an independent electrical circuit separated from other appliances. Do not use adapter plugs or extension cords to connect the appliance to a power outlet.
- To prevent potential electric shock, do not submerge this appliance, its base or power cord in water or any other liquid.
- We recommend that you inspect the appliance regularly. Do not use the appliance if it is damaged in any way or if the power cord or plug are defective. All repairs or adjustments must be performed at the nearest Catler authorised service centre.
- Any maintenance other than standard cleaning must be performed at authorised Catler service centre.
- We recommend installing a residual current device (standard safety switches in your power outlet) to provide a higher level of protection when using the appliance. We recommend installing a residual current device (with a nominal residual operating current of no more than 30mA) in the electric circuit in which your appliance is to be connected. For further expert advice, please contact your electrician.

The user's manual is also available at www.catler.eu.

KNOW YOUR CG 510 COFFEE GRINDER



1. Coffee bean hopper lid

2. Coffee bean hopper

The coffee bean hopper with a capacity of around 250g is equipped with a special lockable system to facilitate handling the hopper and transferring unused coffee beans into the air-tight container.

3. Upper conical burr

4. Coffee bean hopper release button

5. Grind size control knob

The control knob's rotary mechanism allows you to select the correct ground level from 31 presets. You can easily and comfortably grind your coffee for various uses from French press to espresso machines.

6. Stainless grinder housing

The stainless grinder housing with a built-in motor forms a stable and powerful grinder base.

7. Control panel

8. Ground coffee release chambre

The release chamber is designed to allow you to grind coffee directly into the handle as well as the jar.

9. Portafilter holder

The coffee grinder is supplied with two holders of different sizes. Thus, you can grind your coffee directly into the holder for both professional and household coffee machine.

10. Cleaning brush

11. Ground coffee jar lid

12. Ground coffee jar

13. Display

14. SET button

15. + button

16. – button





17. ▷|| button

OPERATING YOUR CG 510 COFFEE GRINDER

BEFORE FIRST USE

Remove all packaging from the appliance and dispose of it in a proper manner. Before a proper disposal, make sure you have removed all accessories from the packaging. Wash the ground coffee jar and holders in warm water with a small amount of washing-up liquid. Rinse and wipe dry. Wipe the coffee grinder housing and coffee bean hopper with a soft sponge lightly moistened in warm water and wipe dry.

COFFEE BEAN HOPPER – ATTACHING AND REMOVING

1. Before attaching or removing the coffee bean hopper, always make sure the power cord is disconnected from the power socket.
2. Attaching the hopper: Align the  symbol on the hopper with  symbol above the coffee bean hopper release button (at the back of the grinder) and turn the hopper till the  symbol is aligned with  symbol.
3. Releasing and removing the hopper: Press the coffee bean hopper release button to release the hopper. The hopper releases and turns. Now, you can remove the hopper from the grinder housing.

NOTE:

If it is not possible to attach the hopper easily, remove any coffee beans with the cleaning brush. The grinder will not start if the coffee bean hopper is not attached properly.

FILLING THE HOPPER

Ensure the hopper is correctly attached. Remove the hopper lid and fill it with fresh coffee beans. Attach the lid. Always ensure the lid is securely attached before turning the grinder on.

NOTE:

We recommend filling the hopper up to the maximum level line. This will exert a constant pressure on the burr stones which is important for correct grinding.



WARNING!
PLEASE
PUT ONLY FRESH
ROASTED COFFEE
BEANS IN THE
COFFEE BEAN
HOPPER. NEVER
PUT GROUND
COFFEE, CRUSHED
COFFEE BEANS,
NUTS OR OTHER
FOODS IN THE
HOPPER.

GRIND SIZE SETTING

The grind size is set by the control knob. If the coffee bean hopper is empty, set the desired grind size while the grinder is turned off.

If the coffee bean hopper is full, set the desired grind size once the grinder is in operation.

Use the control knob to set the desired grind size from 1 (the finest ground coffee) to 31 (the coarsest ground coffee). It's important to select the grind size according to the coffee making method. The line in the front of the grinder shows the set grind size.

GRIND SIZE TABLE

Grind size setting	Coffee making method
1-2	Cezve
3-5	Espresso coffee machines
6-10	Siphon coffee machines
11-20	Drip-coffee machines
17-25	Pour Over machines
26-31	French press

When selecting the grind size, please note the following:

- The finer the ground coffee is, the longer the water runs through the strainer.
- The finer the ground coffee is, the higher is the risk of choking the grinder and the release point. In such case, you can slightly tap the hopper lid during grinding to release the blocked ground coffee.
- If you ground very fine coffee for a prolonged period of time, we recommend that you clean the burr stones after some time. The cleaning procedure is described in the Care and Cleaning chapter further in this manual.

GRINDING COFFEE

1. Put the appliance on a flat, dry and clean surface. Ensure it is correctly assembled, the grind size is set and there are coffee beans in the hopper.
2. Place a jar or a cup under the ground coffee release chamber.
3. Insert the power cord plug to the power socket.
4. There is a short beep sound and the display shows "01" and a cup symbol. That means the grinder will grind one portion of ground coffee for one cup.
5. Use the +/- buttons to set the number of portions of the ground coffee from 1 to 10.
6. Press the ►|| button to start grinding. If you need to stop grinding, press the ►|| button again.
7. The grinder will automatically turn off once the desired quantity of ground coffee has been milled.

NOTE:

The grinder remembers last setting once you have turned it on again. That it not applied when you disconnect the power cord from the power socket.

AMENDMENT OF THE GRINDING TIME OF ONE COFFEE PORTION

If you need to amend the grinding time of one portion, it is necessary to set the number of portions first – see the previous part of the manual.

1. After setting the number of portions, press and hold the SET button until "3.0" flashes on the display. That value indicates the default grinding time of one ground coffee portion.
2. Use the +/- buttons to amend the coffee grinding time in the range from 3.0 to 5.0 seconds. Each press increases or decreases the grinding time by 0.1 second.

3. Shortly press the SET button to save the setting and press the ▶|| to start grinding.

GRINDING COFFEE INTO PORTAFILTER

1. Attach the portafilter holder under the ground coffee release chamber. Push it backwards until it clicks. The display will automatically show a portafilter symbol (the grinder have recognised grinding into portafilter) and value "8.0" (the default grinding time into portafilter).
2. Use the +/- button to set the desired grinding time from 5.0 to 20.0 seconds. Each press increases or decreases the grinding time by 0.1 second.
3. Insert a portafilter to the holder.
4. Press the ▶|| button to start grinding. If you need to stop grinding, press the ▶|| button again.

NOTE:

If you do not insert the holder correctly, it will not be possible to set the correct grinding time.

STANDBY MODE

The grinding time will automatically turn off and enter the standby mode after 3 minutes of inactivity. Press any button to turn it on again.

TIPS AND TRICKS

- Always select the grind size setting level according to the coffee making method – see the grind size table in the previous manual sections.
- If you prefer coffee with weaker taste, make the coffee as recommended, then pour some hot water in the cup.
- If the ground coffee used is excessively fine, the coffee extraction may be very slow. The resulting coffee will be very

over-extracted and very bitter. On the other hand, too coarsely ground coffee will speed up the extraction with the resulting coffee being under-extracted, slack and without strong taste.

- The ground coffee will lose its taste and flavour very quickly. We recommend that you always use freshly ground coffee when making coffee.
- Buy coffee beans in smaller packages with the roasting date stated.
- To prolong the coffee bean freshness, store the coffee beans in an air-tight container in a cool, dark and dry place. The coffee bean hopper is not suitable for storing coffee beans. Thus, it's important for you to transfer the coffee beans from the hopper to an appropriate container for storage.
- Keep the grinder in a clean condition. This will ensure that you always reach the best results when making coffee.

CARE AND CLEANING

Before cleaning, unplug the mains cord from the power outlet and allow the appliance to cool down properly.



WARNING!
TO PREVENT ELECTRIC SHOCK, DO NOT SUBMERGE THIS APPLIANCE, PLUG OR POWER CORD OR IN WATER OR ANY OTHER LIQUID. NO PART OF YOUR APPLIANCE IS SUITABLE FOR DISHWASHER USE.



WARNING!
DO NOT USE ABRASIVE CLEANING AGENTS, STEEL WOOLS, WIRE SPONGES ETC., AS THESE MIGHT DAMAGE THE SURFACE.

CLEANING THE GRINDER HOUSING, COFFEE BEAN HOPPER AND GROUND COFFEE JAR

1. Remove the coffee bean hopper from the grinder base and transfer the unused coffee beans in an air-tight container.
2. Wipe the coffee grinder housing and coffee bean hopper with a soft sponge lightly moistened in warm water and wipe dry.
3. Wash the ground coffee jar, lid and holders in warm water with a small amount of washing-up liquid. Rinse and wipe dry.

CLEANING THE BURR STONES

Depending on the grinder frequency of use, the burr stones should be cleaned on regular basis. If you use the grinder daily, it's necessary to clean the burr stones about every three weeks to ensure correct grinder operation. Regular maintenance will extend the lifetime of the burr stones, therefore the lifetime of the entire grinder.

1. Release and remove the coffee bean hopper. Transfer the coffee beans in an air-tight container.
2. Attach the empty hopper back to grinder and run the grinder empty to remove the rest of the coffee beans from the burr stones. Then release and remove the coffee bean hopper again.
3. Take the upper conical burr by a handle and turn it anti-clockwise to release it and then remove it from the grinding chamber.
4. Use the cleaning brush to remove the ground coffee residues from the upper conical burr.
5. Use the cleaning brush to clean the lower conical burr, grinding chamber and ground coffee release outlet as well.
6. Place the upper conical burr into the grinding chamber so that the protrusions in the grinding chamber were aligned with the openings on the upper conical

burr. Turn the upper conical burr clockwise until you feel resistance.

7. Attach the coffee bean hopper.

THERMAL FUSE

The grinder is equipped with a thermal fuse that is activated when it should be overheated. If such situation occurs, the grinder will automatically pause its operation and turn off. Disconnect the power cord from the power outlet and allow it to cool down for about 30 minutes. Then, you can use it again.

STORAGE

If the grinder is to be left unused, clean it according to the above instructions. Store the grinder in a well-ventilated dry place out of reach of children and animals.

ERROR MESSAGES

Error code	Description	Solution
E1	The coffee bean hopper is not attached, or it is not attached correctly.	Attach the coffee bean hopper according to the instructions in this manual.
E2	The total grinding time is 100 seconds. The grinder will automatically turn off not to get overheated and damaged.	Remove the power cord plug from the power outlet and allow the grinder to cool down for about 30 minutes. Then, you can use it again
	The motor is overheated.	

Note:

If the problem persists, stop using the grinder and contact an authorised service centre.

INSTRUCTIONS AND INFORMATION REGARDING THE DISPOSAL OF USED PACKAGING MATERIALS

Dispose of packaging material at a public waste disposal site.

DISPOSAL OF USED ELECTRICAL AND ELECTRONIC APPLIANCES



The meaning of the symbol on the product, its accessory or packaging indicates that this product shall not be treated as household waste. Please, dispose of this product at your applicable collection point for the recycling of electrical & electronic equipment waste. Alternatively in some states of the European Union or other European states you may return your products to your local retailer when buying an equivalent new product. The correct disposal of this product will help save valuable natural resources and help in preventing the potential negative impact on the environment and human health, which could be caused as a result of improper liquidation of waste. Please ask your local authorities or the nearest waste collection centre for further details. The improper disposal of this type of waste may fall subject to national regulations for fines.

For business entities in the European Union

If you wish to dispose of an electrical or electronic device, request the necessary information from your seller or supplier.

Disposal in other countries outside the European Union

If you wish to dispose of this product, request the necessary information about the correct disposal method from local government departments or from your seller.



The product applies all regulations of EU.

Changes to the text, design and technical specifications may occur without prior notice and we reserve the right to make these changes.

The original version is in the Czech language.

Address of the manufacturer: FAST ČR, a.s., U Sanitasy 1621, Říčany CZ-251 01

Because of continuous improvement of design and other properties, your product may slightly differ from the one shown on the pictures in this manual.

Z důvodu neustálého zdokonaľování designu a dalších vlastností se může vámi zakoupený výrobek mírně lišit od výrobku uvedeného na obrázcích v tomto návodu.

Z dôvodu neustáleho zdokonaľovania dizajnu a ďalších vlastností sa môže vami kúpený výrobok mierne líšiť od výrobku uvedeného na obrázkoch v tomto návode.

A kivitel és más jellemzők állandó fejlesztése miatt a megvásárolt termék enyhén eltérhet az ezen útmutatóban található képeken mutatott terméktől.

Ze względu na ciągłe udoskonalanie designu i innych właściwości, zakupiony produkt może się nieznacznie różnić od produktu przedstawionego na rysunkach w niniejszej instrukcji.

Из-за постоянного улучшения дизайна и других свойств ваш продукт может немного отличаться от представленного на рисунках в данном руководстве.

WWW.CATLER.EU